

RG-NBS31/32 Series Layer 2 Cloud Managed Switches

DATASHEET

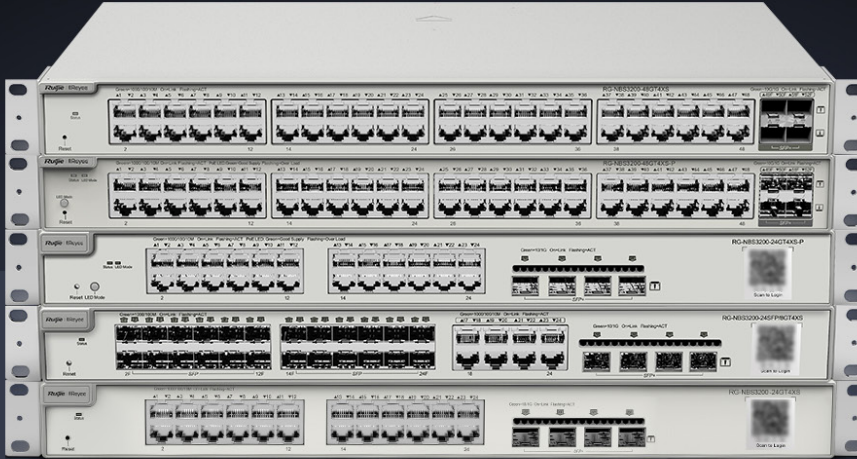


Highlights


- Enterprise-class Quality Ensures High Performance
- Multiple Security Policies Protect Your Network
- Lifetime management on Ruijie Cloud at anytime anywhere

Highlight Features

RG-NBS3000 Series Layer 2 Switch



 PoE Budget
370W

 Max. 30W
on Each Port

 Surge Protection
6KV

 5 Years
Warranty

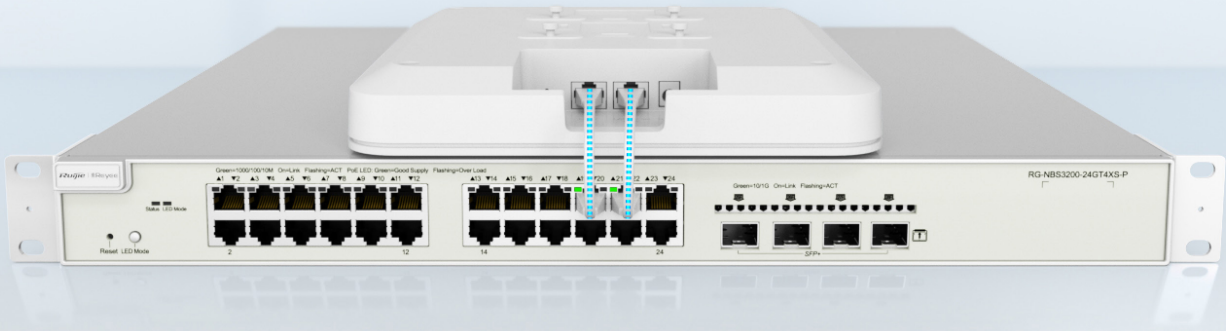
Abundant PoE Application Scenarios



Highlight Features

Enterprise-class Quality Ensures High Performance

Link Aggregation IGMP Snooping VLAN



Enterprise-class Quality Ensures High Performance

Link Aggregation IGMP Snooping VLAN



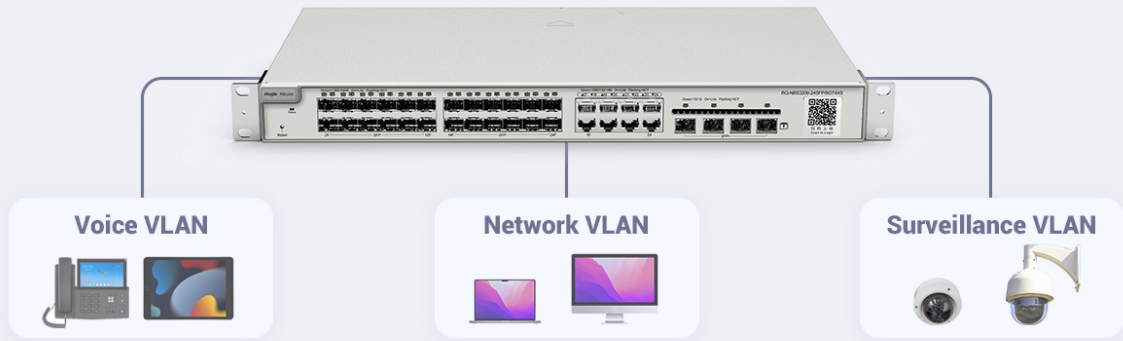
Highlight Features

Enterprise-class Quality Ensures High Performance

Link Aggregation

IGMP Snooping

VLAN



Multiple Security Policies Protect Your Network

Security

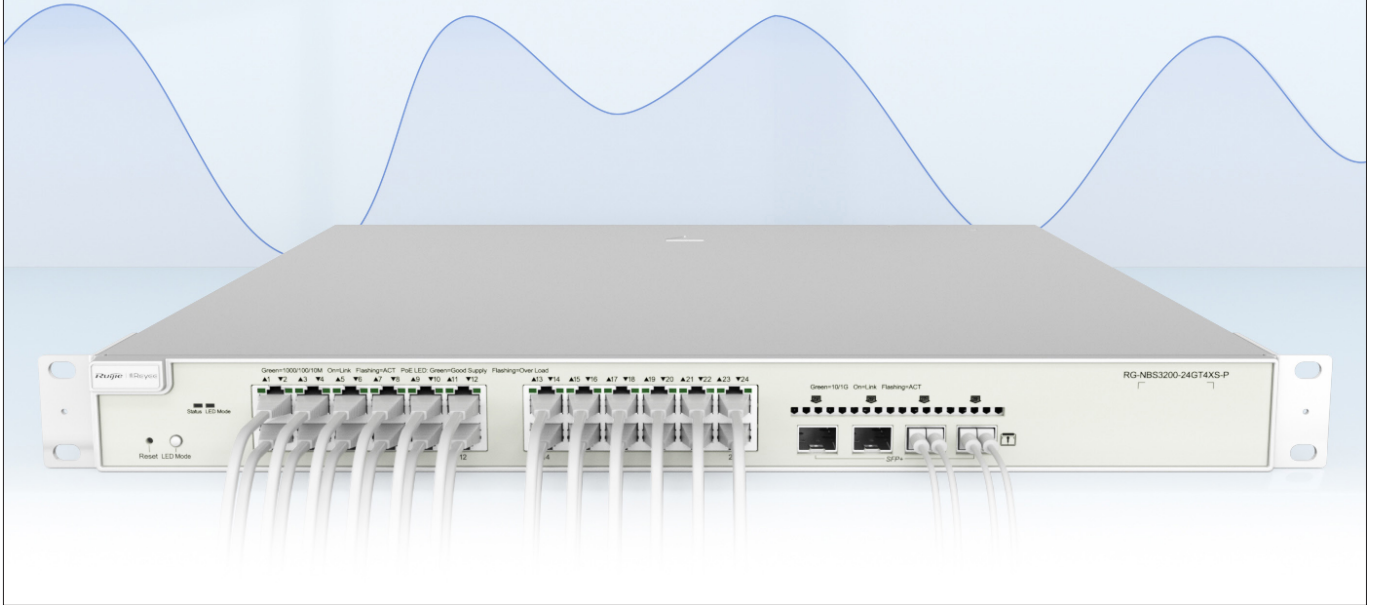
Stability



Highlight Features

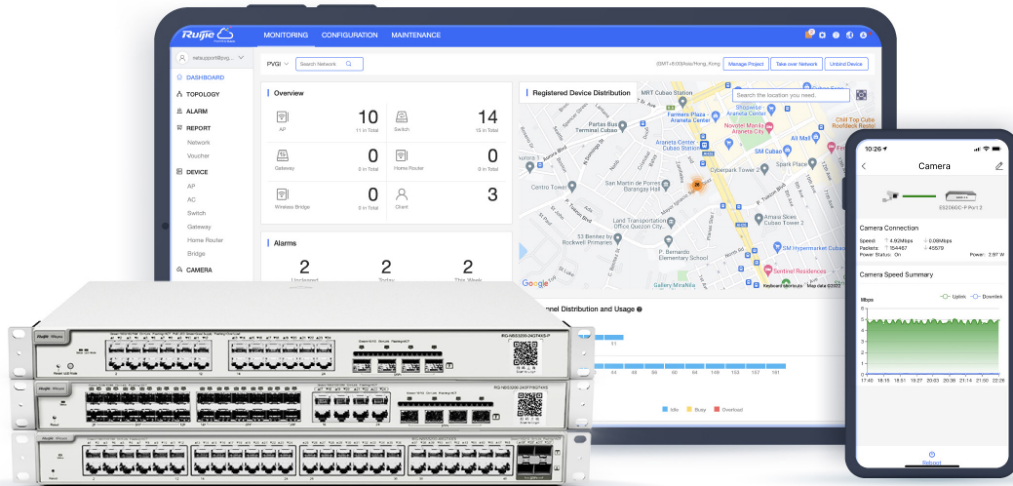
Multiple Security Policies Protect Your Network

Security **Stability**



Cloud, Make Your Business Easy

- SON, zero touch provisioning to Cloud
- Monitor switch statistics at anytime anywhere
- Configure VLANs on Ruijie Cloud APP
- Easy maintenance, save onsite time and cost



Specifications

Basic

| Model | RG-NBS3100-8GT2SFP | RG-NBS3100-8GT2SFP-P | RG-NBS3100-24GT4SFP | RG-NBS3100-24GT4SFP-P |
|-------------------------|---------------------------|--------------------------|------------------------|------------------------|
| 10/100/1000Base-T ports | 8 | 8 | 24 | 24 |
| SFP ports | 2 | 2 | 4 | 4 |
| SFP+ ports | - | - | | |
| PoE/PoE+ ports | - | 8 | FALES | 24 |
| Max. PoE budget | - | 125W | - | 370W |
| Layer Type | Layer 2 | Layer 2 | Layer 2 | Layer 2 |
| Switching capacity | 20 Gbps | 20 Gbps | 56 Gbps | 56 Gbps |
| Forwarding rate | 14.88 Mpps | 14.88 Mpps | 41.67 Mpps | 41.67 Mpps |
| Packet Buffer | 4.1 Mbit | 4.1 Mbit | 4.1 Mbit | 4.1 Mbit |
| MAC address table | 16,000 | 16,000 | 16,000 | 16,000 |
| Maximum VLAN Support | 4094 | 4094 | 4094 | 4094 |
| Dimensions (W x D x H) | 260 mm x 120 mm x 43.6 mm | 330 mmx 220 mm x 43.6 mm | 440 mmx 165 mm x 44 mm | 440 mmx 293 mm x 44 mm |
| Weight (With package) | 1.2 kg | 2 kg | 2.4 kg | 4.5 kg |
| MTBF | > 200,000 | > 200,000 | > 200,000 | > 200,000 |
| Warranty | 5 Years | 5 Years | 5 Years | 5 Years |

Layer 2 Features

| | | | | |
|--------------------|------|------|------|------|
| Jumbo Frame | 9216 | 9216 | 9216 | 9216 |
| Flow Control | ✓ | ✓ | ✓ | ✓ |
| STP (IEEE 802.1d) | ✓ | ✓ | ✓ | ✓ |
| RSTP (IEEE 802.1w) | ✓ | ✓ | ✓ | ✓ |
| MSTP (IEEE 802.1s) | - | - | - | - |
| Port Fast | ✓ | ✓ | ✓ | ✓ |
| BPDU Guard | ✓ | ✓ | ✓ | ✓ |

Specifications

Layer 2 Features

| Model | RG-NBS3100-8GT2SFP | RG-NBS3100-8GT2SFP-P | RG-NBS3100-24GT4SFP | RG-NBS3100-24GT4SFP-P |
|---|--------------------|----------------------|---------------------|-----------------------|
| Errdisable Recovery | ✓ | ✓ | ✓ | ✓ |
| Max. Aggregation Group | 8 | 8 | 8 | 8 |
| Max. Member per Group | 8 | 8 | 8 | 8 |
| Unknow Unicast Storm Suppression | ✓ | ✓ | ✓ | ✓ |
| Multicast / Broadcast Storm Suppression | ✓ | ✓ | ✓ | ✓ |
| Many-to-One Mirroring | ✓ | ✓ | ✓ | ✓ |
| VLAN Range | 1-4094 | 1-4094 | 1-4094 | 1-4094 |
| Port-based VLAN | ✓ | ✓ | ✓ | ✓ |
| MAC-based VLAN | ✓ | ✓ | ✓ | ✓ |
| IP-based VLAN | ✓ | ✓ | ✓ | ✓ |
| Voice VLAN | ✓ | ✓ | ✓ | ✓ |
| RLDP | ✓ | ✓ | ✓ | ✓ |
| LLDP / LLDP-MED | ✓ | ✓ | ✓ | ✓ |
| Cable Testing | ✓ | ✓ | ✓ | ✓ |
| IGMP Snooping v1/v2/v3 | ✓ | ✓ | ✓ | ✓ |

Software Features

| | | | | |
|------------------------|------|------|------|------|
| Ping | ✓ | ✓ | ✓ | ✓ |
| Traceroute | ✓ | ✓ | ✓ | ✓ |
| ACL Entries | 1200 | 1200 | 1200 | 1200 |
| IP Standard ACL | ✓ | ✓ | ✓ | ✓ |
| MAC-based Extended ACL | ✓ | ✓ | ✓ | ✓ |

Specifications

Software Features

| Model | RG-NBS3100-8GT2SFP | RG-NBS3100-8GT2SFP-P | RG-NBS3100-24GT4SFP | RG-NBS3100-24GT4SFP-P |
|--|--------------------|----------------------|---------------------|-----------------------|
| IP-based Extended ACL | ✓ | ✓ | ✓ | ✓ |
| Port-based Rate Limit (Ingress/Egress) | ✓ | ✓ | ✓ | ✓ |
| SNMP v1/v2c/v3 | - | - | - | - |
| Web Management | ✓ | ✓ | ✓ | ✓ |
| Management IP | 10.44.77.200 | 10.44.77.200 | 10.44.77.200 | 10.44.77.200 |
| HTTP/HTTPS | ✓ | ✓ | ✓ | ✓ |
| Cloud Management | ✓ | ✓ | ✓ | ✓ |
| SON (Self-Organizing Network) with IP | ✓ | ✓ | ✓ | ✓ |
| Camera Recognition | ✓ | ✓ | ✓ | ✓ |
| Loop Prevention | ✓ | ✓ | ✓ | ✓ |
| Loop Notification | ✓ | ✓ | ✓ | ✓ |
| PoE Usage Alarm | - | ✓ | - | ✓ |
| Protection Port | ✓ | ✓ | ✓ | ✓ |
| IP Source Guard | ✓ | ✓ | ✓ | ✓ |
| Anti-ARP Spoofing | ✓ | ✓ | ✓ | ✓ |
| DHCP Snooping | ✓ | ✓ | ✓ | ✓ |
| DHCP Client | ✓ | ✓ | ✓ | ✓ |

Physical Features

| | | | | |
|---------------------|-------------------|----------------------------|----------------------------|----------------------------|
| Reset Button | Front | Front | Front | Front |
| Cable Hot-swappable | ✓ | ✓ | ✓ | ✓ |
| Power Supply Slot | Power adpater | Single, fixed power supply | Single, fixed power supply | Single, fixed power supply |
| Power Supplies | 100 - 240V AC, 1A | 100 - 240V AC, 2A | 100 - 240V AC, 0.6A | 100 - 240V AC, 6A |

Specifications

Physical Features

| Model | RG-NBS3100-8GT2SFP | RG-NBS3100-8GT2SFP-P | RG-NBS3100-24GT4SFP | RG-NBS3100-24GT4SFP-P |
|-------------------------------|--------------------------------|--------------------------------|--------------------------------|--------------------------------|
| Power Consumption | ≤ 8W | ≤ 145W | ≤ 21W | ≤ 443W |
| EEE | ✓ | ✓ | ✓ | ✓ |
| Fan | - | - | - | 1 |
| Airflow | - | - | - | Left-to-Right |
| Fan Adaptive Speed Adjustment | - | - | - | ✓ |
| Acoustic Noise | Noiseless | Noiseless | Noiseless | < 45dB |
| Operating Temperature | 0°C to 50°C (32°F to 122°F) | 0°C to 50°C (32°F to 122°F) | 0°C to 50°C (32°F to 122°F) | 0°C to 50°C (32°F to 122°F) |
| Storage Temperature | -40°C to 70°C (-40°F to 158°F) | -40°C to 70°C (-40°F to 158°F) | -40°C to 70°C (-40°F to 158°F) | -40°C to 70°C (-40°F to 158°F) |
| Operating Humidity | 10% to 90% RH | 10% to 90% RH | 10% to 90% RH | 10% to 90% RH |
| Storage Humidity | 5% to 95% RH | 5% to 95% RH | 5% to 95% RH | 5% to 95% RH |
| Port Surge | 6 kV | 6 kV | 6 kV | 6 kV |
| Operating Altitude (meters) | -500 to 5000 | -500 to 5000 | -500 to 5000 | -500 to 5000 |
| Certificate | CE, RoHS | CE, RoHS | CE, RoHS | CE, RoHS |

Package Contents

| Device | RG-NBS3100-8GT2SFP | RG-NBS3100-8GT2SFP-P | RG-NBS3100-24GT4SFP | RG-NBS3100-24GT4SFP-P |
|-------------------------------|-------------------------|-------------------------|--------------------------|--------------------------|
| Mounting Bracket | 2 | 2 | 2 | 2 |
| Foot pad | 4 | 4 | 4 | 4 |
| Power supply | Power adapter | Power cord | Power cord | Power cord |
| Quick Start Guide | 1 | 1 | 1 | 1 |
| Warranty Card | 1 | 1 | 1 | 1 |
| Accessories | Screws * 6 | Screws * 6 | Screws * 6 | Screws * 6 |
| Package Weight | 1.2 kg | 2 kg | 2.4 kg | 4.5 kg |
| Package Dimension (w x d x h) | 361 mm x 259 mm x 94 mm | 401 mm x 359 mm x 94 mm | 533 mm x 258 mm x 102 mm | 573 mm x 401 mm x 145 mm |

| Device | RG-NBS3200-24GT4XS | RG-NBS3200-24GT4XS-P | RG-NBS3200-24SFP/8GT4XS | RG-NBS3200-48GT4XS | RG-NBS3200-48GT4XS-P |
|-------------------------------|--------------------------|--------------------------|--------------------------|--------------------------|--------------------------|
| Mounting Bracket | 2 | 2 | 2 | 2 | 2 |
| Foot pad | 4 | 4 | 4 | 4 | 4 |
| Power supply | Power cord | Power cord | Power cord | Power cord | Power cord |
| Quick Start Guide | 1 | 1 | 1 | 1 | 1 |
| Warranty Card | 1 | 1 | 1 | 1 | 1 |
| Accessories | Screws * 8 | Screws * 8 | Screws * 8 | Screws * 8 | Screws * 8 |
| Package Weight | 2.9 kg | 4.75 kg | 3.35 kg | 3.6 kg | 5.4 kg |
| Package Dimension (w x d x h) | 513 mm x 333 mm x 145 mm | 573 mm x 468 mm x 165 mm | 573 mm x 401 mm x 145 mm | 573 mm x 401 mm x 145 mm | 573 mm x 468 mm x 165 mm |