

RG-RAP1200(P)

Reyee Wi-Fi 5 1267 Mbps Wall-mounted Access Point

DATASHEET



Highlights

- Dual-radio performance, full gigabit wall-mounted access point
- Better experience with MU- MIMO under 802.11ac Wave2
- Multi-service supported with full gigabit ports
- Easy installation, worldwide compatible
- One click to optimize, get better Wi-Fi experience

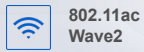
Highlight Features

Dual-Radio Performance, Gigabit Wall-mounted Access Point

Interface

Application

1267 Mbps



802.11ac Wave2



PoE Pass Through



2x2 MU-MIMO



Reye Mesh Technology



Free Cloud Management

Dual-Radio Performance, Gigabit Wall-mounted Access Point

Interface

Application



Better Experience with MU-MIMO under 802.11ac Wave2

Dual Band

802.11ac Wave2

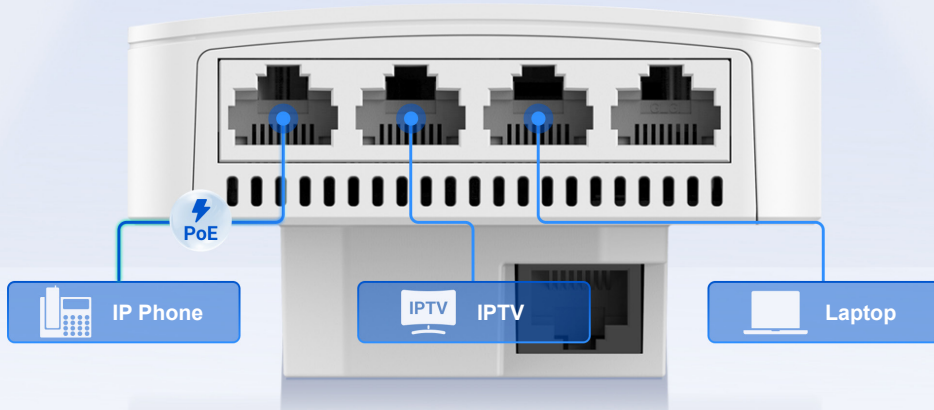
1267 Mbps

11n



Highlight Features

Multi-Service Supported with Full Gigabit Ports



Easy Installation, Worldwide Compatible



One Click to Optimize, Get Better Wi-Fi Experience

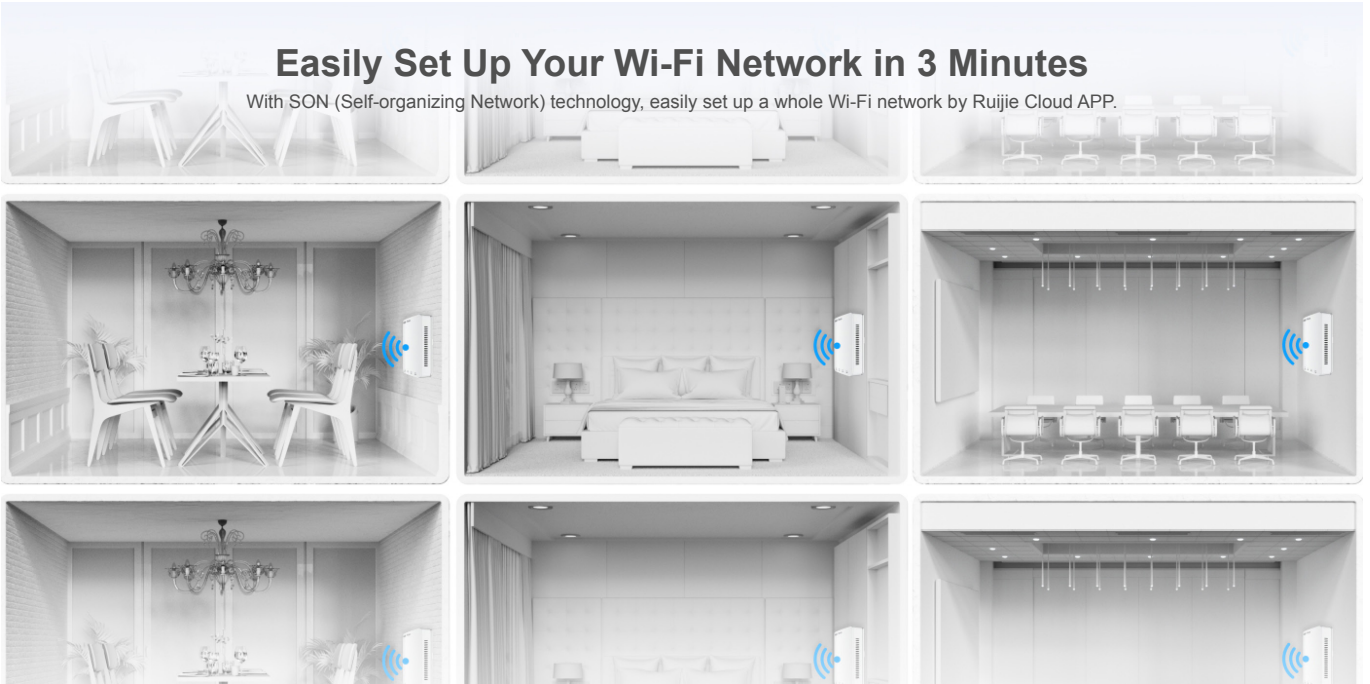
The WIO (Wi-Fi Intelligent Optimization) technology allows you to optimize wireless network by one click.



Highlight Features

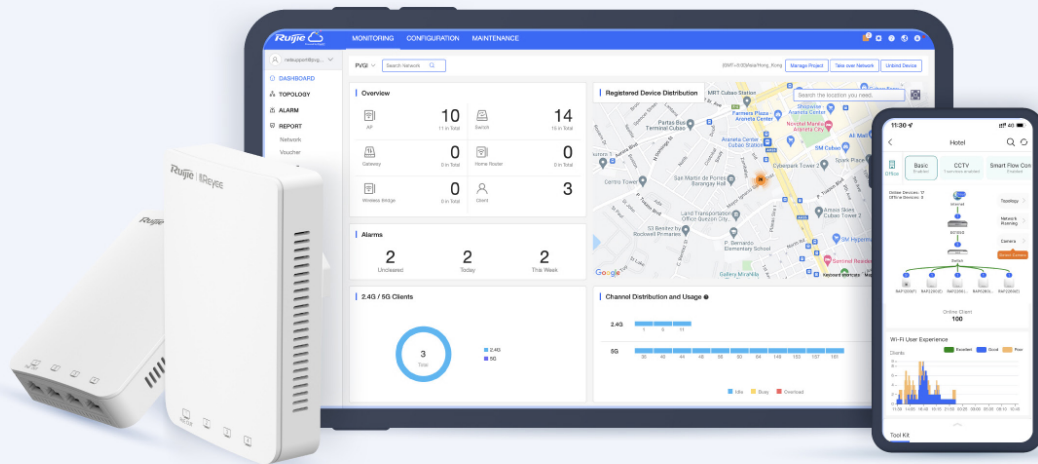
Easily Set Up Your Wi-Fi Network in 3 Minutes

With SON (Self-organizing Network) technology, easily set up a whole Wi-Fi network by Ruijie Cloud APP.



Cloud, Make Your Business Easy

- Self-organizing Network
- Centralized Network Management
- Scenario Based Configuration
- Cloud Portal Authentication
- Remote Monitoring and Maintenance



Specifications

Hardware Specifications

Model	RG-RAP1200(P)	RG-RAP1200(F)
Radio	Dual-stream Dual-band	
Protocol	Concurrent 802.11ac Wave2, Wave1, 802.11a/b/g/n	
Operating Bands	802.11b/g/n: 2.4 GHz ~ 2.4835 GHz 802.11a/n/ac: 5 GHz: 5.150 GHz ~ 5.350 GHz, 5.725 GHz ~ 5.850 GHz. (Note:The operating bands vary according to different countries)	
Antenna	Built-in Antenna (2.4 GHz: 2 dBi, 5 GHz: 2 dBi)	
Spatial Streams	2.4 GHz: 2x2 MIMO 5 GHz: 2x2 MIMO	
Max Throughput	2.4 GHz: up to 400 Mbps 5 GHz: up to 867 Mbps Access rate per AP: 1.267 Gbps	
Modulation	OFDM: BPSK@6/9 Mbps, QPSK@12/18 Mbps, 16-QAM@24 Mbps, 64-QAM@48/54 Mbps DSSS: DBPSK@1 Mbps, DQPSK@2 Mbps, and CCK@5.5/11 Mbps MIMO-OFDM: BPSK, QPSK, 16QAM, 64QAM and 256QAM	
Receive Sensitivity	11b: -91 dBm(1 Mbps), -88 dBm(5 Mbps), -85 dBm(11 Mbps) 11a/g: -89 dBm(6 Mbps), -80 dBm(24 Mbps), -76 dBm(36 Mbps), -71 dBm(54 Mbps) 11n: -83 dBm@MCS0, -65 dBm@MCS7, -83 dBm@MCS8, -65 dBm@MCS15 11ac HT20: -83 dBm(MCS0), -57 dBm(MCS9) 11ac HT40: -79 dBm(MCS0), -57 dBm(MCS9) 11ac HT80: -76 dBm(MCS0), -51 dBm(MCS9)	
Maximum Transmit Power	CE EIRP: ≤19 dBm (2.4 GHz) ≤18 dBm (5 GHz) country-specific restrictions apply	
Adjustable Power	1 dBm	
Dimensions	126 mm × 86 mm × 50 mm	86 mm × 86 mm × 29.3 mm
Weight	0.24 kg	0.05 kg
Service Ports	Front: 4 10/100/1000Base-T Ports, LAN1 supports IEEE.802.3af PoE OUT Rear: 1 10/100/1000Base-T (PoE in)	Front: 1 10/100Base-T Ports Rear: 1 10/100Base-T (PoE in)
LED Indicator	1 LED indicator	

Specifications

Hardware Specifications

Model	RG-RAP1200(P)	RG-RAP1200(F)
Power Supply	Support PoE (802.3af/at)	
Power Consumption	≤ 8W	
Environment	Operating temperature: 0°C ~ 40°C	
	Storage temperature: -40°C ~ 70°C	
	Operating humidity: 0% ~ 100%(non-condensing)	
	Storage humidity: 0% ~ 100%(non-condensing)	
Installation	Wall plate installation	
Safety Standard	GB4943, IEC 62368-1	
EMC Standard	GB9254, EN301 489, EN50155, EN50121, EN55032, EN61000, EN55035	
Vibration Standard	IEC61373	
Radio Standard	SRRC certification, EN300 328, EN301 893	
MTBF	> 250000H	

Software Features

Operating Mode	AP mode and routing mode	
WLAN	Maximum number of clients: 110	Maximum number of clients: 110
	Recommended Clients: 80	Recommended Clients: 40
	Support SSID hiding Configuring the authentication mode, encryption mechanism, and VLAN attributes for each SSID	
	SSID-based and radio-based STA limit	
	Support Layer 2 user isolation	
Roaming	Support Layer 2 and Layer 3 roaming	
Security	Support PSK authentication	
	Support static blacklist and whitelist	
	Support WPA (TKIP), WPA2 (AES), and WPA-PSK data encryption	

Specifications

Hardware

Model	RG-RAP1200(P)	RG-RAP1200(F)
Routing	Support static IP address, DHCP, PPPoE Dial Up	
Management and maintenance	Support unified networking of all network equipment Support local or remote management with Ruijie Cloud app Support local management with web Support remote management with Ruijie Cloud platform	

Package Contents

Device	RG-RAP1200(P)	RG-RAP1200(F)
Mounting Screw	2	2
Quick Start Guide	1	1
Warranty Card	1	1
Package Weight	0.31 kg	0.19 kg
Package Dimension (w x d x h)	150 mm x 110 mm x 65 mm	128 mm x 116 mm x 50 mm

Ruijie | 睿 Rcycc

 Redefine your easy network



Ruijie Networks Co., Ltd
Floor 11, East Wing, Zhongyipengao Plaza,
No.29 Fuxing Road, Haidian District, Beijing China
Website: <https://www.ruijienetworks.com>