



# PA22

## Contactless Palm Biometric Standalone Terminal



Card



Palm



Wi-Fi



TCP/IP



RS485



Wiegand

Compatible with

 **ZKBio Access IVS**

ZKTeco developed PA22 with Computer Vision Technology that included 3-in-1 contactless palm recognition. This contactless palm recognition terminal, powered by ARMATURA, can perform biometric authentication with a user's palm vein, palm print, and the shape of palm at the same time once the sensor detects a hand presented.

PA22 has a 2.4-inch high-resolution screen, a touch keypad, and an intuitive UI design. The Computer Vision Technology in PA22 offers reliable palm recognition, the angle tolerance for palm recognition can be as wide as +/- 60 degrees (roll axis), and the maximum palm recognition distance is 0.35 meters depending on the palm size. In addition, PA22 offers fast recognition, which takes as fast as 0.4 second seconds per palm.

PA22 ensures high levels of data protection & security by adopting the AES-128 encryption standard.

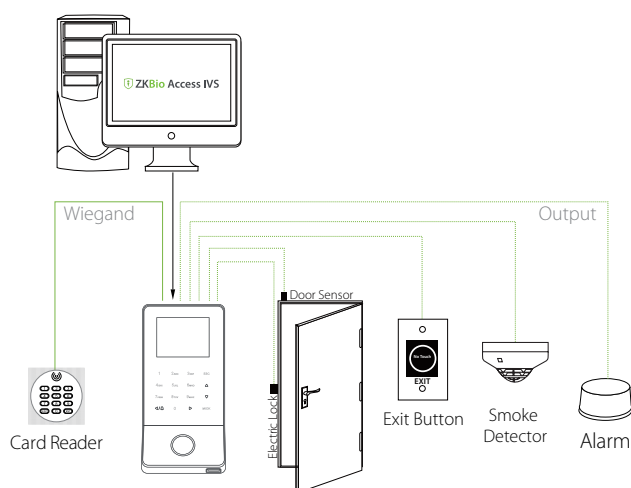
## Features

- 2.4-inch TFT color screen and touch keypad
- Unrivaled Palm Recognition with 0.4 seconds per palm
- Palm recognition distance range: 18cm to 35cm
- Card recognition distance range Up to 3 cm
- Wi-Fi and TCP/IP Network Communication
- Compatible with ZKBio Access IVS

## Specifications

Model	PA22
Display	2.4-inch TFT Color Display (320*240)
Hardware	1.0GHZ Dual Core ARM Processor,Memory 256MB Flash,256MB RAM
Authentication method	Palm Recognition, RFID Card, Pin Code
Palm Capacity	2500
Card Capacity	5,000
Transactions	50,000
Palm Recognition Time	≤0.4 seconds per palm
Palm Recognition Distance	18cm - 35cm(7" - 13.7")
Communication	TCP/IP, RS485, Wiegand, USB, WiFi
Standard Functions	TCP/IP, USB Host, T9 input, 14 Digit User ID, Record Query, Webserver, Magnetic Tamper Detection System, Live Palm Detection
Support Card Type	ID Card
Algorithms	Armatura PALM 12.0
Power	12V DC, 3A
Operating Temperature	-5°C to 45°C
Operating Humidity	10 - 95% RH (Non-condensing)
Operating Lighting Environment	≤2000lux
Dimensions (L*W*H)	159.8 * 80.7 * 41(mm)
Certifications	ISO 9001, ISO 14001, CE, FCC, RoHS
Supported Software	ZKBioCVAcess

## Configuration



## Dimensions (mm)

