

SpeedFace M4

Linux-Based Multi-Biometric
Access Control and Time & Attendance Terminal
with Visible Light Facial Recognition &
Palm Recognition (Customized)



Multiple Card
Formats



IP66



Wide Operating
Temperature Range



Proactive
Facial Recognition



Wide Palm Pose Angle
Acceptance

Compatible with

ZKBio CVAccess

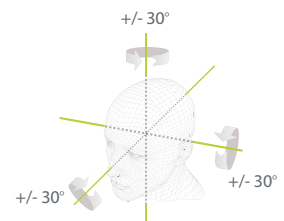


Features

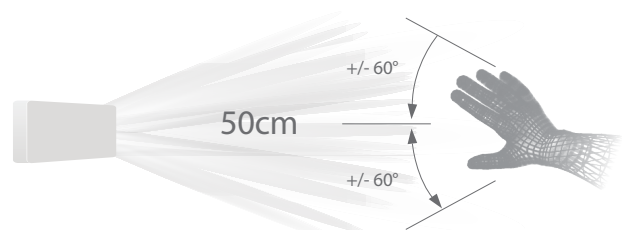
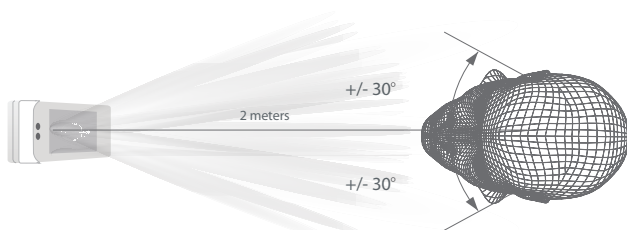
- Visible Light Facial Recognition
- Anti-spoofing algorithm against almost all kinds of print attack (laser, color and B/W photos), videos attack and 3D mask attack
- Multiple verification methods: Face / Palm (Customized) / Card / Password
- Available card modules: ID / IC / HID / iClass / Felica / Desfire EV1 / EV2 / Legic
- Supplement light with adjustable brightness
- Capacity: 6,000 face templates; 3,000 palm templates (Customized); 10,000 cards; 200,000 logs
- IP66

2 meters of recognition distance and extra wide angle recognition

The recognition distance has been greatly extended to 2 meters, which significantly improves the maximum traffic rate. While most of the algorithms only support $\pm 15^\circ$ of detectable face angle, SpeedFace M4 doubles the detection angle in terms of head rotation and tilt to $\pm 30^\circ$.



Touchless palm authentication (Customized) method with a novel hand tracking technique allowing angle tolerance as wide as $\pm 60^\circ$ in the roll axis and a recognition distance of 50cm.

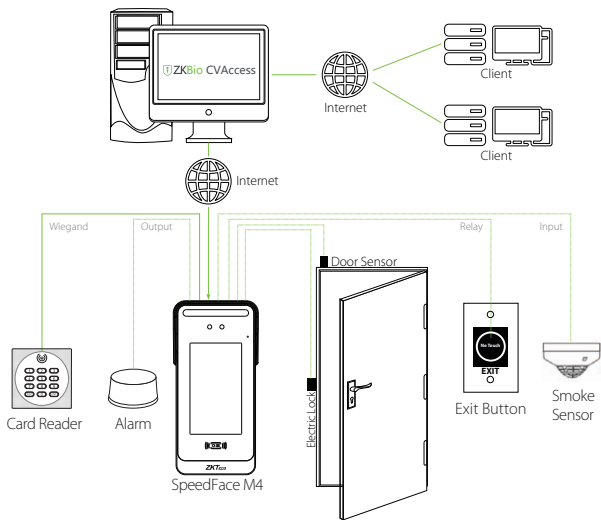


Specifications

Display	5" Touch Screen
Face Capacity	6,000
Palm Capacity	3,000
Card Capacity	10,000
Transaction	200,000
Operating System	Linux
Function	ID Card, ADMS, DNS, T9 Input, DST, Camera, 9-digit User ID, Advance Access Control, Groups, Holidays, Anti-passback, Record Query, Tamper Switch Alarm, Bell Scheduling, POE (Optional, IEEE 802.3at-2009)
Hardware	1GHz Dual Core CPU 1G RAM / 8G Flash 2MP WDR Low Light Camera Adjustable LED Supplement Lighting Rain Cover (Optional)
Communication	TCP/IP, Wi-Fi (Optional), Wiegand Input / Output, RS485*
Access Control Interface	3rd-party Electric Lock, Door Sensor, Exit Button, Alarm Output, Aux. Input
Optional Card Module	IC / HID / iClass / Felica / Desfire EV1 / EV2 / Legic
Facial Recognition Speed	≤ 0.5s per face
Biometrics Algorithms	ZKFace V3.9 & ArmaturaPalm (Customized)
Protection Level	IP66
Power	Voltage: DC 12V Current: Max. 3A
Working Humidity	10% to 90%
Working Temperature	-10°C to 50°C
Dimensions (W*H*D)	103.83 * 212.41 * 50.60 (mm)
Supported Software	ZKBio CVAAccess

* Note: RS485 is for RS485 readers.

Configuration



Dimensions (mm)

